

STORAGE DISASTER RECOVERY:

Instant Snapshots and Remote Replication for Business Continuity, Disaster Recovery & Storage Protection

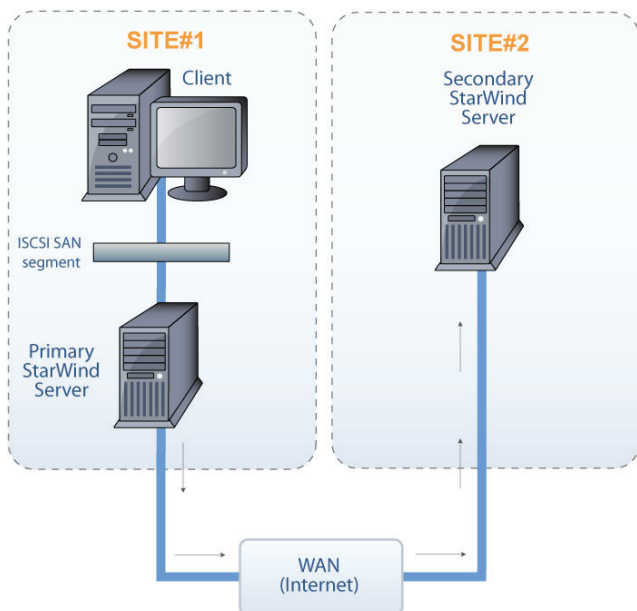
DISASTER RECOVERY

With StarWind's storage protection features, you will have a more robust disaster recovery, business continuity and failover plan. It's one thing if data is compromised, you can easily recover a lost file, or volume. But what if your application server fails or your physical location is damaged due to fire or a natural disaster? With Remote Replication you can fail over to a remote site and your applications can be up and running in minutes instead of hours. Replication is a key component of disaster recovery and business continuity. And with StarWind's Snapshots feature, you will help protect against any user errors or system failures with instant, point-in-time volume copies that can be scheduled or performed manually. These Snapshots allow instant data recovery via volume rollback.

REMOTE REPLICATION & BACKUP

Asynchronous replication is important for disaster recovery because it allows you to copy mission-critical data over the WAN to a secure remote location. This data can be recovered within a short recovery point and with minimal disruption.

Replicating data to an offsite location allows you to be up and running during a disaster. This allows a robust disaster recovery plan to fail over to a remote site, knowing that your data is intact.



REMOTE REPLICATION AND BACKUP

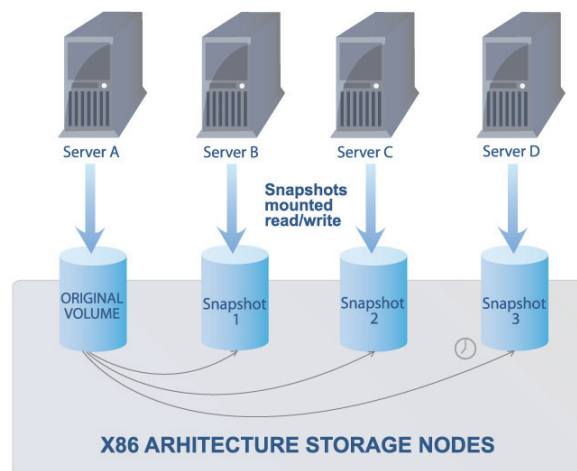
- Replicate data off-site over a WAN using standard IP/Internet
- Have data stored remotely for protection
- Allows for Disaster Recovery planning

POINT IN TIME SNAPSHOTS

- Instantly recover and roll back an entire disk volume or individual files and folders
- Perform manually or schedule and capture point-in-time block level copies

LIVE, POINT-IN-TIME SNAPSHOTS

StarWind's Snapshots capture a volume's state at any point in time. You can perform the Snapshots manually or have them scheduled. These live, point-in-time Snapshots are instant and capture a consistent state of the data you have stored on the SAN.



Snapshots are instant, point-in-time images that can be mounted read/write and used just like any other volume.

If you need to recover an entire volume, you can roll back to return the snapshot of that volume to any specific point in time. And if you want to restore individual files or folders, you can simply mount a snapshot and retrieve that data. Almost 90% of data is lost due to human error but your storage will be completely protected with StarWind's Snapshots which will allow you to quickly and easily recover your mission-critical information.



Turn Any Server Into a SAN.
Enterprise Features. SMB Price.™

www.starwindsoftware.com

ABOUT STARWIND

Since 2003, StarWind has been a pioneer in the iSCSI storage industry and has been the solution of choice for thousands of global customers in over 50 countries, from SMBs, to governments, and to Fortune 1000 clients.

©2009, StarWind Software Inc. All rights reserved. StarWind Enterprise Server is a registered trademark of StarWind Software.